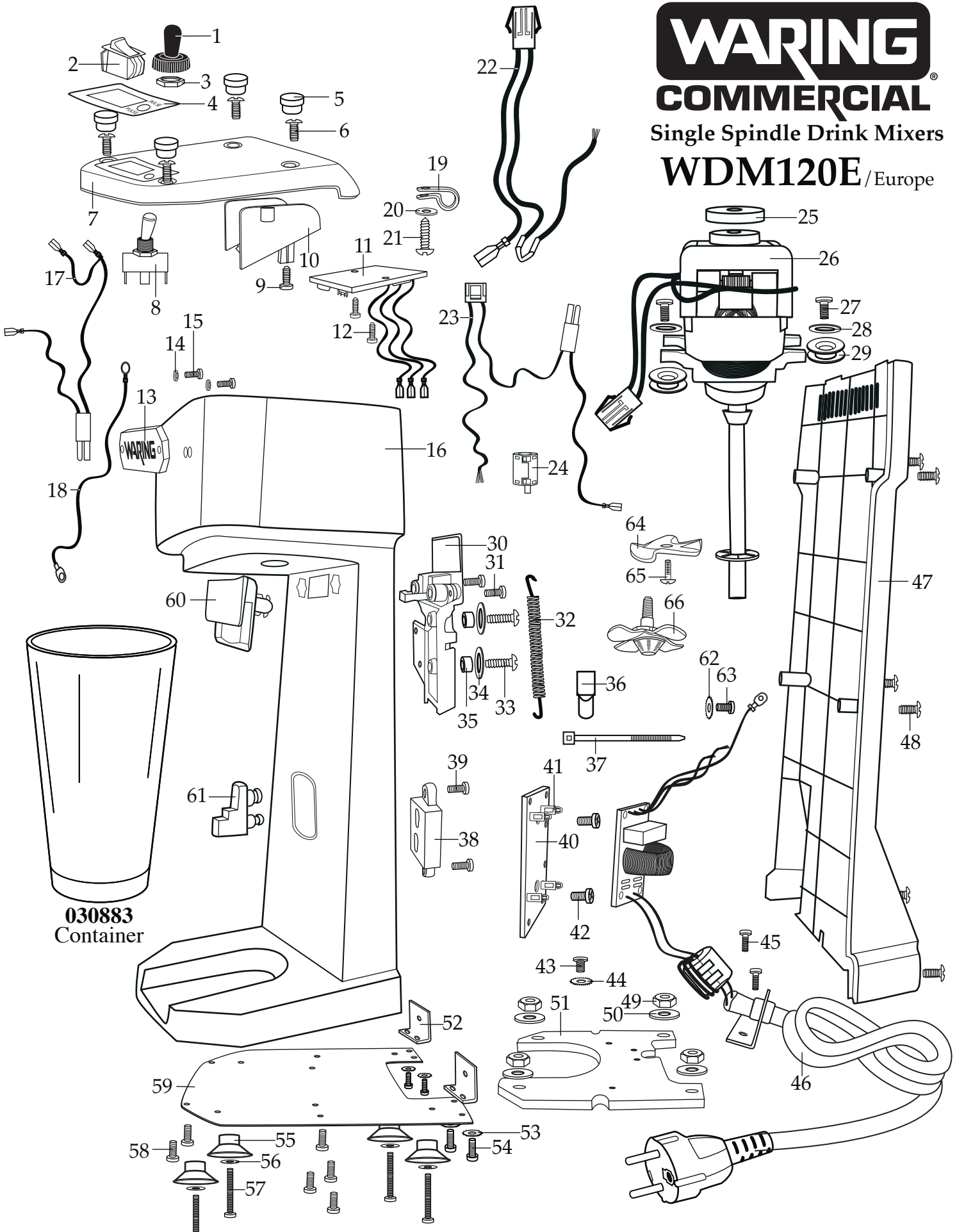


WARING® COMMERCIAL®

Single Spindle Drink Mixers
WDM120E / Europe



| Illustration # | Part # | Description |
|-----------------------|------------------|---|
| 1 | 030682 | Switch Boot |
| 2 | 030683 | Rocker Switch |
| 3 | 016236 | Hex Nut |
| 4 | 030684 | Switch Plate |
| 5 | 030685 | Rubber Hole Plug (4 required) |
| 6 | 033901 | Screw (4 required) |
| 7 | 034297 034298 | Top Housing Top Housing with PC Holder |
| 8 | 034299 | Toggle Switch |
| 9 | 033886 | Screw |
| 10 | 034300 | PC Holder |
| 11 | 033889 | PC Board |
| 12 | 033886 | Screw (2 required) |
| 13 | 030689 | Nameplate |
| 14 | 030690 | Nameplate Washer (2 required) |
| 15 | 030691 | Nameplate Screw (2required) |
| 16 | 030692 | Front Housing |
| 17 | 033888 | Toggle Switch Black Lead Harness |
| 18 | 034301 | 17.5" Green Ground Lead |
| 19 | 030708 | Top Housing Cable Clamp |
| 20 | 030702 | Washer |
| 21 | 033900 | Screw |
| 22 | 033891 | Black and Brown Lead Harness |
| 23 | 033892 | Blue, White and Black Lead Harness |
| 24 | 034302 | Ferrite Core |
| 25 | 030694 | Top Motor Mount |
| 26 | 034304 | Motor |

| Illustration # | Part # | Description |
|-----------------------|---------------|---|
| 27 | 033901 | Screw (2 required) |
| 28 | 030696 | Washer (2 required) |
| 29 | 030697 | Side Motor Mounts (2 required) |
| 30 | 030699 | Actuator Switch with Switch Bracket and Metal Plate |
| 31 | 030700 | Actuator Bracket Screw (2 required) |
| 32 | 030701 | Spring |
| 33 | 030686 | Actuator Switch Screw (2 required) |
| 34 | 030702 | Actuator Switch Washer (2 required) |
| 35 | 030703 | Actuator Switch Sleeve (2 required) |
| 36 | 012409 | Crimp Connector (2 required) |
| 37 | 013731 | Wire Ties (8 required) |
| 38 | 030704 | Cup Support Locking Assembly |
| 39 | 030700 | Screw (2 required) |
| 40 | 034303 | PCBA Holder |
| 41 | 033881 | Press Lock Stand-offs (4 required) |
| 42 | 033901 | Screw (4 required) |
| 43 | 030706 | Ground Screw |
| 44 | 030707 | Ground Lock Washer |
| 45 | 033901 | Screw (2 required) |
| 46 | 034305 | Cord, PCBA, Bracket and Ferrite Core Assembly |
| 47 | 030705 | Back Housing |
| 48 | 033901 | Back Housing Screw (6 required) |
| 49 | 033898 | Foot Hex Nut (4 required) |
| 50 | 033897 | Foot Large Washer (4 required) |
| 51 | 034306 | Bottom Plate Weight |
| 52 | 033895 | Bottom Plate Bracket (2 required) |

| Illustration # | Part # | Description |
|-----------------------|---------------|---------------------------------|
| 53 | 033970 | Washer (4 required) |
| 54 | 033969 | Screw (4 required) |
| 55 | 030719 | Foot (4 required) |
| 56 | 030696 | Foot Washer (4 required) |
| 57 | 030715 | Foot Screw (4 required) |
| 58 | 033901 | Bottom Plate Screw (6 required) |
| 59 | 034307 | Bottom Plate |
| 60 | 030717 | Cup Actuator |
| 61 | 030718 | Cup Support |
| 62 | 030707 | Ground Washer |
| 63 | 030706 | Ground Screw |
| 64 | 030716 | Solid Agitator |
| 65 | 029291 | Solid Agitator Screw |
| 66 | 029292 | Butterfly Agitator |

**Parts of 030699**